

OVER 50?

If you are over 50, male or female, would you be interested in joining a social group? Wine Tasting nights, music evenings, social walks and days out. If you are interested then please call 01525 270585 or email the newsletter address at the bottom of this page.

LOLLIPOPS TODDLER GROUP

The group will run its last session on the 22nd July then close for the summer break. We will re-open on the 2nd September. Have a great summer see you all then.

CRICKET FIXTURES

<http://www.soulburyvcc.org.uk/>

Saturday	5th July	Home	Elstow 1st XI	League
Sunday	6th July	Home	Drayton Parslow	Friendly
Saturday	12th July	Away	Edlesborough	League
Sunday	13th July	Home	Shenley Church End	Friendly
Saturday	19th July	Home	Open University	League
Sunday	20th July	Away	Eaton Bray	Friendly
Saturday	26th July	Away	Old Bradwell	League
Sunday	27th July	Away	Aldbury Entertainers	Friendly



ALL SAINTS CHURCH SERVICES

Priest in Charge : Michelle Morton : The Vicarage, Stewkley. Tel. 240287

Curate : Rev. Peter Lymbery : 17 Hartwell Crescent, Leighton Buzzard. Tel. 371235

Sunday	6th July	11:30am	Holy Communion
Sunday	13th July	11:30am	Family Service
Sunday	20th July	11:30am	Holy Communion
Sunday	27th July	11:30am	Holy Communion
Sunday	3rd August	11:30am	Holy Communion

DATES FOR YOUR DIARY

Tuesdays	1st, 8th, 15th & 22nd	10am-11:30am	Lollipops Toddler Group	
Thursdays	3rd & 17th	6:30pm	Youth Club	Clubroom
Fridays	4th & 18th	1:00pm	Mobile Library - Stewkley Road Bus Stop	
Thursday	3rd July		AVDC Collection for Recycling & Glass	
Tuesday	8th July		W.I. - Canal Trip	
Monday	14th July	7:30pm	Parish Council Meeting	Clubroom
Thursday	17th July		AVDC Collection for Recycling	

Thank you to Mr Stuart Bell for kindly sponsoring this month's newsletter.

If you would like to sponsor an issue, or submit items for publication by 23rd July please contact:

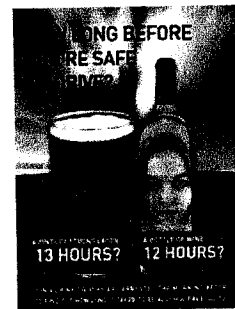
Mrs. Bunyan 270461

Mrs. Norman 270483

or email James Mansfield-Sturgess at soulburynews@dsl.pipex.com

SOULBURY NEWSLETTER

NUMBER 378 JULY 2008



DRINK DRIVING CAMPAIGN

Bucks County Council is promoting this summer's Drink Drive campaign and this year they are focussing on the risks of driving the morning after drinking. Many people will be attending summer parties and BBQs in the next couple of months and may not think of the consequences of drinking and driving. Nearly one in five people are caught the morning after and do not realise they can lose their license if they are over the legal alcohol level.

If you would like more information then go to www.morning-after.org.uk

MILLENNIUM GREEN NEWS CHURCH NEWS

At the Annual General Meeting of the Millennium Green Trust on Wednesday 4th June, five trustee members attended, as well as the Treasurer, Graham Catchlove and two members of the public.

The Chairman, Jane Philpott; Secretary Jean Hunt, trustees Nan Chadwick and Chris Bryant resigned. It was sad to see Jane go - she has been so much a part of the Green for so many years, ever since its foundation 10 years ago and before. We wish her all the best for the future and hope she recovers fully from her present illness and that we shall see her again at future events very soon.

After the minutes of the last AGM were agreed and signed, the Treasurer gave a detailed report on the financial situation. Although income is down on last year, there is money in the bank at the moment. However in order to maintain a steady balance, we need to raise £3000 a year with fund raising activities. This year it has not been possible to do this because of various difficulties.

Jane gave a comprehensive report of the last year's activities and thanked everyone for all their hard work. The election of a new chairman was deferred until the next meeting. The treasurer was re-elected and Elizabeth Caplan was instated as our new secretary. The four trustees are Christine Sheppard, Bob Beaumont, Liz Miller and Jon Sheppard. We are still looking for a Chairman, any one like to offer?

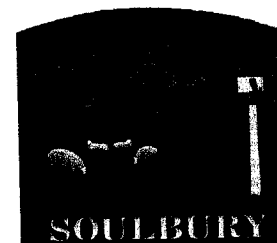
The next meeting is on Tuesday 1st July at 7:30pm in the Clubroom. Do come along if you would like to find out more about the Millennium Green Trust and become more involved.

It is really great to have Michelle back again. She has come twice to All Saints to preach and say the prayers. She shares the service with Peter and together they make an excellent team. She came on 15th & 22nd June and we shall see her again this month, I'm sure. As you may know, the benefice no longer includes Drayton Parslow, but Michelle now has four parishes, the two new ones being Cublington and Aston Abbots so she has to do a lot of flying about on Sundays. We are lucky to have the Rev. Peter Lymbery to help out whenever Michelle has to go elsewhere. The Family Service will be on 13th July. Michelle is doing Baptisms on this day, so if anyone would like to have their babies, children (and adults too) baptised, please phone Michelle on 240287.

The Barn Dance which took place at Ridge Dean Farm was a huge success with about 230 people attending. The weather was fine and dry although it turned a bit chilly later. You may have seen the photo of Michelle Morton, having a ride on the Bucking Bronco in the LBO. She certainly had a lot of fun. The PCC would like to thank Michelle Wilde for allowing her barn to be used, a proper barn dance in a proper barn! Many thanks also to Jackie Ridley, Michelle Morton, Debbie Kellner and Margaret Owen and their families for the sterling effort they all put into organising such a big occasion. A sum in excess of £2000 was made for the church.

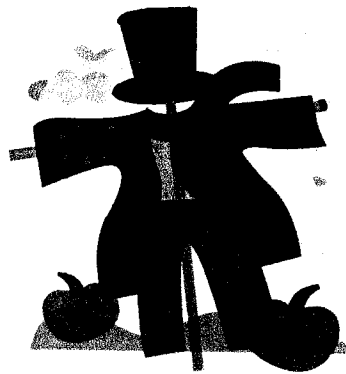
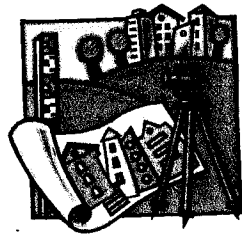
The Open Gardens weekend was very successful too. This was organised by the Friends of Soulbury Church. Many thanks go to them and to Margaret Owen and helpers for organising the delicious teas and cakes. The weather was not as kind as it could have been, a little bit wet on the Saturday and very windy on Sunday. On the other hand it could have been a lot worse. The gardens were delightful and the owners had obviously put in a lot of time and effort in making their flowers, bushes and plants look so attractive. Lots of thanks to all those who opened their gardens and to everyone who came along to support the event - a total of £1272 was raised.

A mysterious occurrence took place in the churchyard recently at the end of May. A large arrangement of yellow flowers, chrysanthemums and roses on a tray about 2 feet long, was placed by a family member on a gravestone by the church porch. They have disappeared. If anyone can throw any light on this upsetting, apparently mean and thoughtless act could they please phone Christine on 270377. It is possible there is a perfectly innocent misunderstanding of some sort, but it doesn't look like it at the moment.



PARISH PLAN

By now you should have received your parish plan questionnaire. It is in your interest to complete this, so that your views can be taken into account when deciding on future developments in the parish.



THE GREAT SOULBURY SCARECROW HUNT

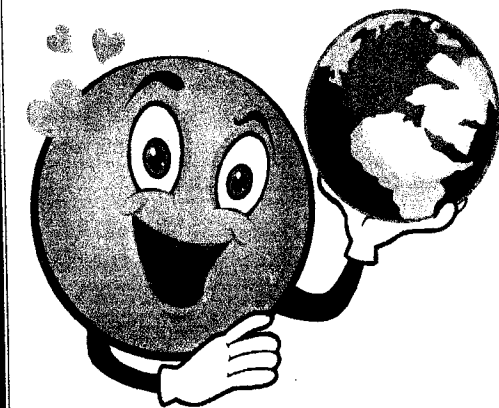
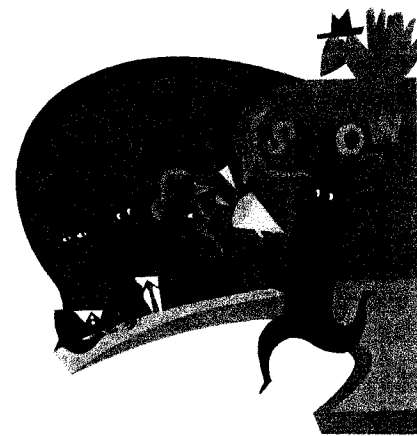
Advanced notice about this event to be held on Saturday 20th September. Individuals or groups are invited to make a scarecrow and stick it/him/her in the garden for people to see. For more information, please phone Mrs Brenda Howell on 01525 270307 but you can start planning your scarecrow now and collecting suitable items to make it with.

Join the fun! Full details and entry forms will be included in the newsletter and can also be downloaded from www.soulbury.org.

SOULBURY'S GOT TALENT

Do you sing into your hairbrush? Dance in front of the mirror? Or have any other secret skills? Then why not come along to Soulbury's Got Talent on Saturday 2nd August at Ridge Dean Farm, Dean Farm Lane, Soulbury. If you are interested in performing in the show or watching a fun filled evening being entertained by your friends and neighbours then please contact Sam Mardlin on 01525 270292, or email sammardlin@aol.com or Julie Axtell-Powell on 01525 27044, or email joolestap@aol.com

Tickets are £7.50 for adults and £5.00 for children (£1 reduction for contestants) and include a Ploughman's Supper. All monies raised will go towards Soulbury Church Fabric Fund.



SOULBURY E-NEWSLETTER?

Would you be interested in having the Soulbury News sent directly to your email each month instead of having a paper copy delivered to your door? It would save printing costs and reduce the valuable time that our delivery volunteers give up each month. You would also see that this page is in glorious colour! If there is enough demand then this is something that we can seriously consider.

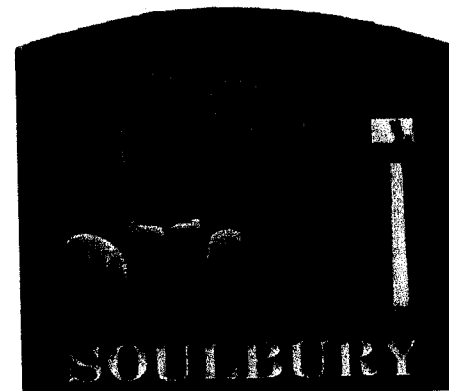
Please send your email and postal address to soulburynews@dsl.pipex.com

We won't disclose your details to anyone else.

ANY NEWS?

If you have an event you would like to advertise then why not drop us a line? We always welcome items - and if you can send them in via email to save on the typing then even better!!

Don't forget to let us know how the event went - as you can see from this month's edition, Soulbury has a thriving fund-raising and social calendar so why not shout about it?



Garden Machinery Service

Repairs and sales by :

RGC Machinery, Station Road, Mursley, MK17 0SA. Most leading makes supplied. Local collection and delivery. Reconditioned mowers usually available. Also suppliers of TVss & Farm Machinery.

Tel : 01296 720066

Web : www.rgcengineers.co.uk

Lawson & Co Accountants

For all your tax and accountancy needs, including VAT, Payroll and Tax returns First consultation free Competitive rates.

Tel : 08707 541854

Fax: 01525 279550

Email:

alison@lawsonaccountants.com

Denne Country Stores

On Your Doorstep!!

Pet Food & Supplies

We stock all major brands

Equestrian Specialist

Tack, Rugs, Lotions, Potions

Drive Through Feed Barn

Clothing & Foot Wear

From Wellington boots to Cowboy boots.

Work overalls to latest fashions.

DIY, Fencing & Farm Supplies

DOLLAR FARM

Tel: 01525 270211

Open 6.5 days

www.dennecountry.co.uk

ASM Ceramic Tiling

All Kitchen and Bathroom tiling plus under floor heating.

Trained and fully insured.

Free Quotes.

Call Michael on 01525 270929



Gemstone & Beaded Jewellery & Tiaras by Jacqui Butler

A wide range of jewellery & other beaded items.

Beautiful bridal tiaras, hairpins & jewellery, using Swarovski crystals and gemstones, at affordable prices. Design Service offered for a nominal fee. Jewellery Parties. Treat yourself or someone else!

Visit www.beadfusion.co.uk or call 01525 270646

H N Racket Services

Racket re-stringing from £16.50 (dependent on string type)

Replacement grommet and bumper strips. Replacement grips - Over grips. Performance socks - Headwear, Elbow and other support aids. Player & Court accessories.

Call for further details and to place an order :

01525 383712 or 07941 887441

Mobile Therapist

Reflexology, Maternity Reflexology, Renu Lift Facials, Non-surgical facelift treatments, using skincare products from Susan Molyneux.

Covering Leighton Buzzard and surrounding villages and also now at Fitness First in Central Milton Keynes.

Email tracey@feetfirst-reflexology.co.uk or phone 07963 797613 for further details or to make an appointment.

www.feetfirst-reflexology.co.uk

The Gardening Gal

General garden maintenance for senior citizens only.

Contact Elaine Smith on 07724 167160

Do you require a carpenter?

Contact Mr Colin Hicks

10 Victoria Road, Linslade

Tel : 01525 633825

Do you require a gardener?

All aspects of gardening undertaken by Soulbury Resident

Call Tony on 07947 170211

Charles Hill

Garden Services Ltd.

All aspects of garden and landscaping work undertaken.

Tel : 01525 222227

Mob : 07773 723236

charles@charleshillgardenservices.co.uk

Hill View Cottage, Bragenham Lane, Soulbury, LU7 0EE

Eco-Tec Electrical

Reliable local electricians.

Rewiring, additional/replacement sockets, lighting, showers, low energy.

All electrical work including new installations, Part P compliant. Free Quotes, no call out charges. Contact Ray Coey on 01525 270538

eco-tec.electrical@virgin.net

Reiki Healing

Do you : Need Healing? Need Chilling? Need to Relax?

Let me help you feel good.

Doreen Williams Brown
(Reiki Practitioner)
01525 270648

the great soulbury scarecrow hunt

saturday 20th september 2008

- Join in the fun and collect your Scarecrow Hunt badge and form (£2.00) from the Church porch from 12 noon until 5pm on the day
- Look for as many scarecrows as you can find in the village.
- Complete the form with the scarecrows' names and the places where you find them, add your name and telephone number, and (**most important**) the name of your favourite scarecrow, and return to the Church porch by 6pm when the competition finishes
- Enjoy lunchtime snacks and afternoon Cream Teas which will be on sale in the Church - everyone is welcome
- If you have found all the scarecrows your entry will go into a draw for the winner, to be made by Rev Michelle after the Harvest Festival service on 21st September

we need scarecrows . can you help?

- Old or Young, double your fun and make and name a scarecrow for your front doorstep/window/garden, and enter the Favourite Scarecrow competition. Scarecrows must be easy to see from the path, road or public right-of-way outside your house
- Entry forms are attached (one for each scarecrow please) and should be completed and returned by the 6th September at the very latest to :-
- Chris Bryant, Margaret Bunyan, Brenda Howell, Jane Luxton, Christine Sheppard or Margaret Owen

OR:

- Download the entry form from the village website, complete, and e.mail to: rattieh@tiscali.co.uk. Please head your email 'Scarecrow'

